



# SETOUCHI CIRCUS FACTORY

瀬戸内サーカスファクトリー



SETOUCHI  
CIRCUS  
FACTORY

info@scf.or.jp  
<http://scf.or.jp/>

SETOUCHI CIRCUS FACTORY WEB





## MISSION

# Creating a unique culture

Contemporary circus is a performing art utilizing the superbly trained human physique that evolves phantasmagorically while incorporating music, drama, dance, art, video images, and various other elements. The SETOUCHI CIRCUS FACTORY crafts creations that incorporate elements of local culture into art and drama performances. As a pioneer of contemporary circus in Japan, we are creating “culture that exists only here” born from the natural features and climate of the Setouchi region.

# Our region's strength is its people

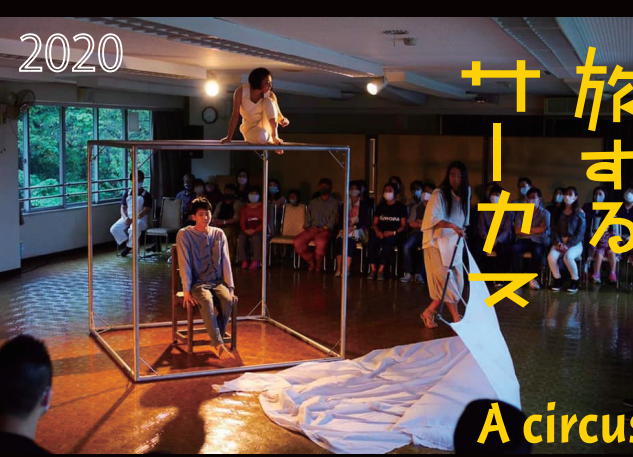
We believe that it is people—human resources—that are the key to expanding the strengths of the Setouchi region. Through activities involving “event management” and “circus classrooms” that utilize characteristics unique to the circus, our artists and staff nurture children’s “creativity”, “cooperative skills”, and “ability to train the body for physical expression”, opening the door to each child’s potential.

# Connecting the Setouchi region with the world

While undertaking creation and production activities hand-in-hand with the local community, the SETOUCHI CIRCUS FACTORY also supports activities inviting overseas artists and staff to Japan as well as disseminates information globally through our network of contemporary circuses in Europe, Asia, and Oceania. Our co-creation activities with local community members support the building of networks transcending national borders, generating new strengths that connect the people of the Setouchi region with people around the world.



2020



夜の旅するサーカス

A circus that travels at night



YonaYona Circus 2020



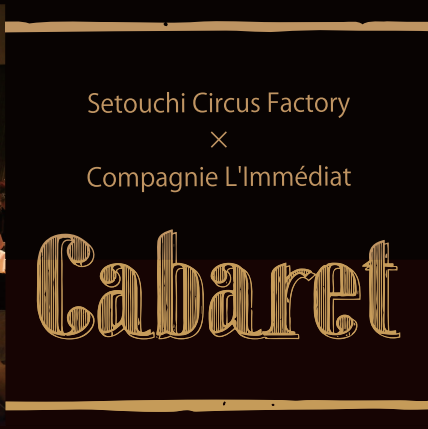
2019 Night circus train



Distance between "performing arts" and everyday life



2014

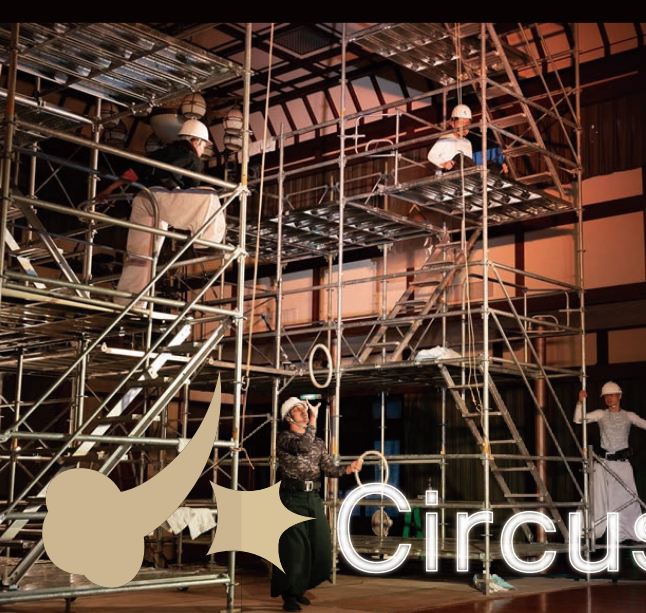


Japan-France Joint Production: "Refrain—Recollections of the Wind" 2018

IT IS PRECISELY IN REGIONAL AREAS THAT FASCINATING CULTURE CAN BE BORN



Contemporary circus culture that exists only here



2019 OLA!

Circus as art



2019 La Vigne French Tour



2012 A 100-year circus



2019 An ironworks circus

Cutting-edge, yet indigenous

2012-2020 WORKS SETOUCHI CIRCUS FACTORY

# Circus Creation Center

A very important element for the contemporary circus is to ensure a place and environment for rehearsal and creation. This is because the most important thing for circus artists is repeated training and rehearsals on a daily basis; like athletes, they must train continuously for long hours at a time. For example, training for areal art/tightrope walking requires a large space more than 10 m x 15 m wide and 7 m high, as well as sturdy anchoring fixtures to ensure that equipment is firmly fixed in place. The SETOUCHI CIRCUS FACTORY currently accepts artists and carries out training/rehearsal and creative activities centered on two locations—the gymnasiums of former elementary schools Takamatsu City and Mitoyo City—that fulfill our requirements for rehearsing and training.

*Takamatsu City  
Former Kaminishi Elementary School Gymnasium*

*Mitoyo City  
Former Kanda Elementary School Gymnasium*

Moving forward, we intend to secure more training/rehearsal and creation facilities to be operated on a project-by-project basis.



## “Associate Artist” system

The SETOUCHI CIRCUS FACTORY introduced the “Associate Artist” system in 2020 for the purpose of selecting a small number of artists who the SETOUCHI CIRCUS FACTORY wishes to encourage and whose activities are based in Kagawa Prefecture. These artists receive the backup of the SETOUCHI CIRCUS FACTORY for their activities and are given priority with regard to the provision of training facilities, creative support, and performance/workshop job opportunities.

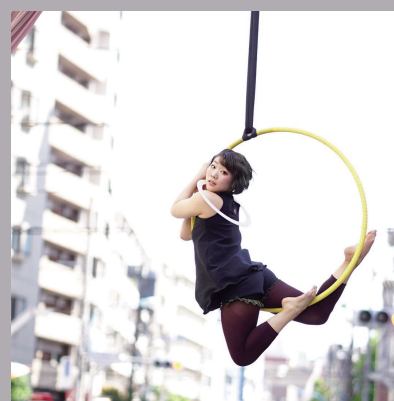
In addition to the above-mentioned support, the profiles of Associate Artists are displayed on the SETOUCHI CIRCUS FACTORY’s official website, together with their individual numbers and links to videos of their performances as well as technical riders prepared in both Japanese and English with the cooperation of the SETOUCHI CIRCUS FACTORY, assisting these artists to promote their activities overseas as well. Associate Artists and SETOUCHI CIRCUS FACTORY are partners collaborating together to promote projects and achieve further contemporary circus development.



野瀬山 瑞希  
Nobeyama Mizuki



谷口 界  
Kai Taniguchi



長谷川 愛実  
Aimi Hasegawa



吉田 亜希  
Aki Yoshida

Associate Artist

©Mai Sato

©Reiko Wakai

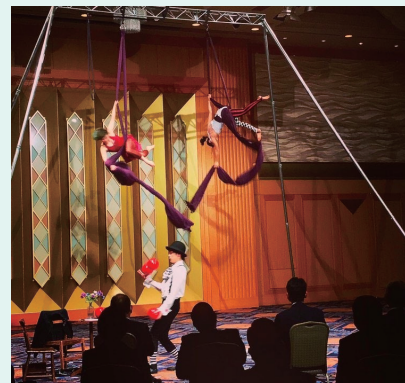


## SCF BIZ.02 Event produce

The SETOUCHI CIRCUS FACTORY creates plans and proposals for one-of-a-kind circus performances tailored to “clients’ objectives”, “target audiences”, “experiential value that clients wish to provide”, “venue size and atmosphere”, and “budget”. Performances can be utilized for a wide range of scenarios, such as drawing attendees to events held by companies, shopping centers, stores, and tourism sites or enhancing their recognition and appeal; emotional educational at schools; and regional revitalization.

Performance example

**Circuses can be held anywhere?! From small rooms to huge stadiums, we boast a versatile performance lineup!**



Aerial arts (aerial tissue, aerial ring, etc.)

Juggling

Stilt-walking

High unicycle

Pantomime

Contortion

Dance

Collaborations between the performing arts and circus

\* Please feel free to make inquiries regarding performance costs or content.

\* The SETOUCHI CIRCUS FACTORY produces and stages all shows; artists are not hired out individually.

## SCF BIZ.01 Circus School



### [Liberty Kids ☆ Gym]

**Developing a strong body while having fun playing!  
Nurturing various abilities that are useful in society**

Liberty Kids ☆ Gym is a gymnastics class where children learn gymnastic moves incorporating circus activities such as juggling, aerial art (movement in the air), and tightrope walking, but that feel like fun play and games. The class’s objective is not to train children for competing or competitions, but rather “discover and nurture their individuality and expressive ability”. Fusing sports and art, this completely new method can also be used as a kindergarten/nursery school extracurricular activity or paid community center program.



### Aerial fitness

“Aerial fitness” is a fitness class in which participants perform fitness exercises in the air safely at a low height. These movement exercises performed while floating in the air are novel sensations. In a slightly elevated place liberated from the ground, participants work-out comfortably, without overexerting themselves, as they enjoy moving their bodies. Feel energized in daily life through exercise that you can continue without ever giving up due to pushing yourself too hard! Whether you’re male or female, you can aim to achieve a beautiful toned bodyline!



## Circostrada

Established in 2003, Circostrada is a global network of contemporary circus and street arts organizations based in Europe (headquarters: France).

Supported by the European Commission and France’s Ministry of Culture, this network has more than 100 member organizations from 35 countries around the world and actively carries out artistic exchange through various programs, such as research trips and workshops, as well as biannual general meetings. The SETOUCHI CIRCUS FACTORY was accredited at the first official member of Circostrada from the Asia region in 2017.



## Circus Asia Network (CAN)

This contemporary circus network was established in 2018 at the instigation of the SSACC (Seoul Street Arts Creation Center) with twelve member organizations from seven countries in the Asia/Oceania region. As of 2020, network membership comprises organizations from the ROK, Japan, Taiwan, Cambodia, Mongolia, Indonesia, and Australia; the SETOUCHI CIRCUS FACTORY has been active as a core member since the network’s foundation.

# INCLUSIVE

## Sanuki Rock 'n' Roll Circus

Featuring music bands and dancers, this barrier-free rock ‘n’ roll festival welcomes participants both with and without disabilities. This event is a collaboration with music therapy group WALKS that was launched in 2017 as part of inclusive social development activities incorporating forms of expression that are the SETOUCHI CIRCUS FACTORY’s field of expertise.



Deeply impressed by artists “living solely by their bodies” : Dreaming of establishing a base in Japan for contemporary circus culture

I first encountered contemporary circus in 2004, when I was still working for The Hokkaido Shimbun Press. Deeply impressed by the way circus performers “live solely by their bodies”, I decided to become a contemporary circus specialist. I left Hokkaido for France in 2007 and published “Circus ni Aitai—Invitation for the Contemporary Circus” in 2009.

Subsequently, after being in charge of performing arts at the Echigo Tsumari Art Triennale and Setouchi Art Triennale artistic festivals, I became an independent performing arts producer and moved to Kagawa Prefecture out of my strong desire to “create a base for developing contemporary circus culture in Japan and sharing this culture with the world”. Here I founded the “SETOUCHI CIRCUS FACTORY” for the purpose of creating new culture with members of the local community.

Bringing together Japanese performers who up until then had not had the opportunity to experience the “creation” process, I am continuing to create works with the assistance of overseas artists while at the same time training and nurturing artists, staff, and technicians as well as securing places for training and creation with the cooperation of local community members.

Moving forward, I intend to continue carrying out these activities with the aim of establishing a cultural base that will draw the world’s attention in five or ten years’ time based on the expertise and experience I have accumulated thus far.

## Michiko Tanaka

Representative Director, SETOUCHI CIRCUS FACTORY  
Contemporary Circus Director  
Member of Circostrada Network